



MARKPOL
GENERAL DEALERS

COMPANY PROFILE

2025





CONTENTS

- 3** About Us
- 4** Why Choose us
- 5** Our Services
- 11** Our Management
- 16** Certifications
- 17** Contact us



BRIEF HISTORY

Markpol General Dealers is a Zambian owned company that is rooted in the construction industry with extensive experience in design, construction and maintenance. Officially established in 2020, Markpol Construction is a company fully owned by indigenous Zambians and is incorporated under the Zambian Companies Act No. 10 of 2017. We are also involved in providing services such as bush clearing, landscaping. The firm's main activities are Building and Civil Engineering works, Architectural & Structural Design, Plumbing and Electrical Wiring, Road Construction & Maintenance. We are focused on delivering quality goods and services to our customers at very competitive prices/fees. Our aim is to deliver beyond the expectations of our clients.

Markpol General Dealers is managed by a highly competent management team. The company currently has self-motivated and well-trained management staff and a varied number of skilled engineers and non-skilled staff. Who brings work that is done closely with our clients to accurately interpret their dreams/ visions in drawings and bring them to the desired reality through construction solutions to meet their needs; We communicate with our clients throughout the construction process to keep them informed of progress and to ensure that our project keeps on schedule and within budget.



OUR MISSION

Our vision is to be one of the most accessible and affordable suppliers/Contractor of quality Goods and Services in Zambia, and eventually become one of the largest employment creators in Zambia.



OUR VISION

To be a company, having only but your best interest at heart, by providing people with quality infrastructure and service they deserve."



OUR CORE VALUES

Quality- we are committed to providing the highest quality services and products to our clients and to add value to investment through our end-to-end engineering processes and systems.

Values- we treat our client's business as our business by providing value for money and obtaining the most competitive pricing.

Integrity- we are transparent and honest in all our business to ensure we build trust and long-term relationship with our clients.

Innovation- we aspire to continuously provide our client with improved, innovative and effective solutions.

WHY CHOOSE US

As part of your procurement process, you may be assessing more than one supplier. Naturally, we hope you choose Markpol General Dealers . With I Markpol Construction you are assured of quality infrastructure and accessories at a competitive price.

Customer satisfaction is at the heart of everything we do. Our ultimate goal is to provide quality engineering and construction services that are perfect for your needs. As such, we keep up to date with the latest technology and invest in state of the art facilities allowing us to provide the best possible services. Let us put your building and construction concerns to rest with our experienced and personalized approach to service, taking care of your building and renovations projects with a simple and hassle-free experience, Read more about our company below.

Experience

Our team has 8+ years of experience in the construction industry, and we have a proven track record of delivering excellent project delivery to our clients.

Competitive Pricing

We offer competitive pricing for all of our services, and we are always looking for ways to help our clients save money on their civil engineering and construction costs.



Reliability

We understand the importance of timely and accurate project delivery, and we always strive to meet or exceed our clients' expectations.

Exceptional Communication

We offer open channels of communication in everything we do. When you hire us, there are no surprises, just results. We'll keep you up to date on



CIVIL AND STRUCTURAL ENGINEERING

- **CIVIL ENGINEERING WORKS** – General Building, Road, Construction, Feeder Road Construction and, Culvert installation works. , Drainage, Bridges & Earth works
- **ELECTRICAL WORKS** - Electric power generation, transmission and distribution, Electrical wiring/installations
- **STRUCTURAL ENGINEERING** - (Structural Steel Construction Warehouse and Concrete Works)
- **WELDING & FABRICARION** - Metal Structure Fabrication, Arc & Gas Welding, Custom Metal Artwork. Pipe Welding and Fabrication, Sheet Metal Forming, Heavy Equipment Repair

BUILDING MAINTENANCE AND CONSTRUCTION WORKS

- Design & Building of Residential and Commercial Buildings
- Building Maintenance, Renovations and Alterations
- Concrete and masonry works
- Plumbing, carpentry, painting, Roofing and paving/tiling works
- Installation of Suspended Ceiling boards, Particle, Rhino ceiling and PVC ceiling boards

BUILDING & CONSTRUCTION



Design & Build of Residential and Commercial Buildings, Building Maintenance, Renovations and Alterations

Markpol General Dealers offers both the design and the construction of the client's project. We have a team consisting of engineers who are all involved in meeting the clients' expectations. This delivery enables the fastest construction turnaround. We specialise in bringing architectural visions to life. From residential projects that turn dreams into homes, to commercial ventures that redefine business spaces, our skilled team handles every aspect with precision. With an eye on innovation and a dedication to quality, we ensure that every structure we build stands as a testament to our expertise. From concept to completion, Markpol General Dealers is here to build your future with unwavering craftsmanship and reliability.

At Markpol General Dealers, we provide integrated construction solutions covering civil works, electrical systems, structural engineering, welding and fabrication, and full-scale building projects. Our services range from road construction, culverts, drainage, bridges, and earth works to power generation, transmission, distribution, and wiring installations. We deliver steel and concrete structures, custom metal fabrication, equipment repair, and diverse building solutions including residential, commercial, and retail developments, renovations, maintenance, and finishes such as roofing, tiling, and ceiling installations. We also supply solar energy solutions for utility, commercial, residential, and agricultural use. With skilled professionals and trusted partners, we ensure every project moves smoothly from concept to completion.

CIVIL AND STRUCTURAL ENGINEERING

Cementation, Structural Steel Construction, Drainage, Bridge & Earth works

With a diverse set of construction skills and services, Markpol General Dealers can handle a variety of project needs and client preferences. It ensures that their clients' goals and expectations are never compromised. From large to small projects, Markpol General Dealers is your industry specialist in Civil engineering projects.

Road Construction Works

At Markpol General Dealers we have the capacity to undertake all manner of roadworks and infrastructural development including storm water drainage, water and sewer reticulation. We are able to quickly rehabilitate existing roads in need to reconstruction.

Markpol General Dealers, we are here to work for you. With each task, we apply the high standard of professional skill and service to ensure a quality road. From day one, we provide honesty, integrity and quality in all aspects of the job. We work with your insurance companies for a rate that has your best interests in mind. We do not charge hidden fees or change the rates without notifying you. We apply quality in the materials and tools we use, to ensure that the road we construct will survive the years ahead.



The Company employs cost effective measures through detailed designs and lean management processes in delivering simple to complex projects. The Company achieves this noble mission through a team of highly experienced personnel across all the fields as well as encompassing young vibrant talents with a thirst to make a mark!

SOLAR ELECTRICAL SUPPLY & INSTALLATION

Markpol General Dealers is a premier provider of electrical products and installation services, catering to both domestic and industrial sectors. We supply a diverse range of electrical products including circuit breakers, wiring accessories, lighting fixtures, industrial control components, and high-voltage transformers, among others. Our portfolio is carefully curated to include only the highest quality items from reputable manufacturers, ensuring that our clients receive products that are not only durable but also comply with the latest safety standards. Whether you need basic electrical supplies for home renovations or sophisticated components for industrial setups, Markpol General Dealers is equipped to meet all your electrical needs with precision and professionalism.

We also specialize in comprehensive installation services across various settings. From the wiring of new residential buildings to the complex electrical systems required in industrial facilities and mines, our skilled technicians are adept at planning, executing, and completing installations with efficiency and compliance with all regulatory requirements. We pride ourselves on delivering tailored solutions that optimize functionality and safety, helping our clients achieve seamless operations whether at home or in their industrial environments.



WELDING AND FABRICATION

Markpol General Dealers we specialize in delivering top-tier Welding and Fabrication services that stand as a testament to our commitment to quality and craftsmanship. Our experienced team of welders and fabricators excels in transforming raw materials into functional and aesthetic wonders. Whether it's crafting robust structural components for industrial projects or fashioning intricate metal designs that elevate spaces, our versatile capabilities cover a wide spectrum. With a meticulous approach to detail, a dedication to safety, and a passion for innovation, we ensure that every piece we create not only meets but exceeds industry standards.

Metal Structure Fabrication
Custom Metal Artwork.
Pipe Welding and Fabrication
Sheet Metal Forming
Heavy Equipment Repair



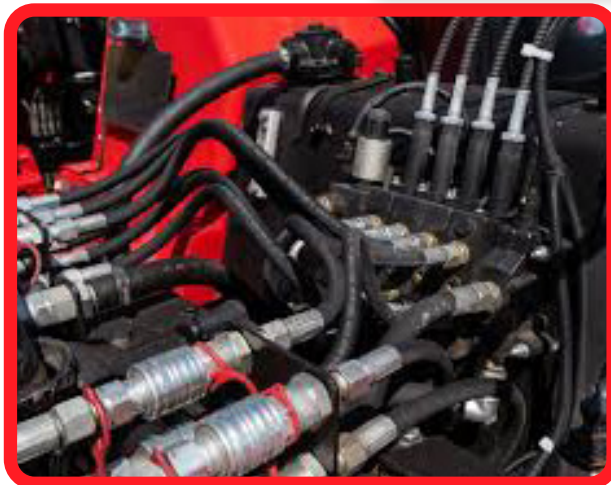
SHUTDOWN AND MAINTENANCE

Markpol Supply Solutions Ltd is a leading provider of plant shutdown maintenance services, offering strategic solutions that support both manufacturing and energy industries. We specialize in planned shutdowns, which are temporary halts in operations designed for comprehensive inspections, critical repairs, and essential upgrades of industrial equipment, systems, and infrastructure. Our portfolio of services is structured to minimize downtime, prevent costly breakdowns, and enhance the overall efficiency and reliability of assets, ensuring clients maintain safe and compliant operations at all times.

We also deliver tailored shutdown execution across various industrial environments. From routine servicing of machinery to the complex turnaround requirements of large facilities, our skilled team brings precision, professionalism, and compliance to every project. We pride ourselves on planning and completing shutdowns efficiently, extending the lifespan of critical assets while aligning with regulatory standards. Whether your needs involve small-scale adjustments or full-scale industrial maintenance programs, Markpol Supply Solutions Ltd is well-equipped to deliver dependable solutions that keep your operations running smoothly.



MECHANICAL FITTINGS



"Our team is highly experienced in the supply and installation of mechanical fittings, having supported major industrial, commercial, and residential projects across Zambia. We have worked with a wide range of products including piping systems, valves, precision fittings, and structural assemblies. The team is also conversant with compliance-driven installations, ensuring quality and reliability at every stage. We can also provide skilled technicians, fitters, and support staff for projects of any scale, with all personnel undergoing regular training and screening to guarantee efficiency, safety, and adherence to industry standards.



LABOUR HIRING

We provide labor and equipment to assist in processing and crushing plants, we can provide the following labor services;

ARTISAN BOILER MAKERS

- Fabrication of plant components: hoppers, chutes, vibrating feeders, crushers, piping, and drum carriage sledges.
- Plant fitting and installation services.
- Structural steel fabrication and erection.
- Scheduled and emergency plant repair works.
- Specialized welding services: SMAW, GTAW, and FCAW.
- Repair and reclamation of worn-out parts and welded components.

WELDERS

- Rehabilitation of Bull Gear and Pinion for the 12,000kW Walking Dragline (Zambian Queen) and hard-facing of bucket and teeth.
- Skilled in SMAW, GTAW, FCAW, and coded stainless steel welding.
- Expertise in rigging and mechanical installations.
- Supply of shutdown personnel: riggers, fitters, laborers, and spotters.
- All staff trained and screened to ensure safety, quality, and compliance

B. MOTOR VEHICLES X6

01 – TOYOTA DYNA 3.5 TONS TRUCK

02 – TOYOTA DUTRO HINO 3.5 TONS TRUCK

03 – NISSAN TIIDA

04 – TOYOTA NOAH BUS, TOYOTA HILUX AND FORD RANGER

B. PLANT

01 – CONCRETE MIXERS (03#)

02 – PLATE COMPACTOR

03 – WHEEL BARROWS

04 – SPADES

05 – SHOVELS

06 – DUMPY LEVEL

07 – 3000WATTS GENERATOR SET (03#)

08 – ANGLE GRINDERS

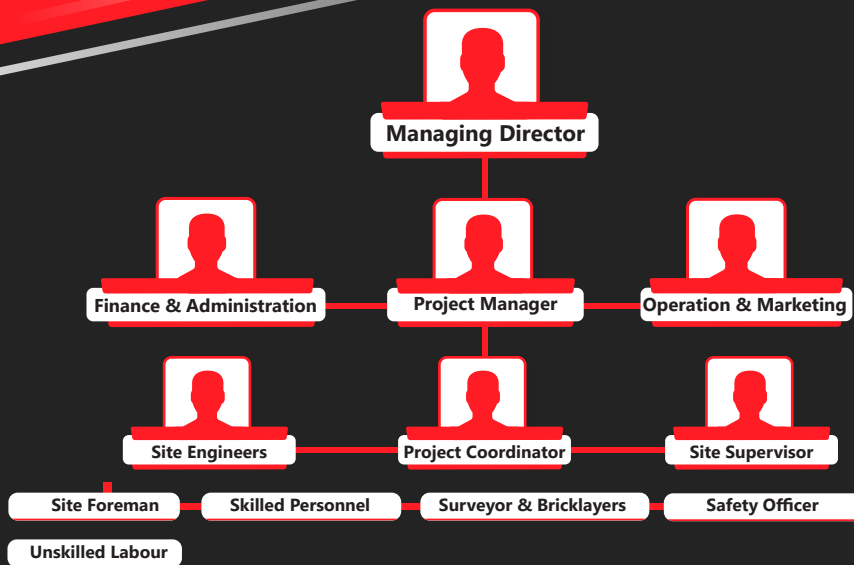
09 – DRILLING MACHINES

10 – WATER HONDA GENERATOR 5.5HP

Markpol General Dealers has enough equipment and tools which enables it to successfully complete projects on time. Construction equipment to Markpol General Dealers enjoys the highest priority and attention. The company does not experience difficulties with essential tools in each project/contract it undertakes, hence the successful completion of a projects.



OUR TEAM



The management team at Markpol General Dealers are committed to maintaining the highest possible standards for our customers and projects. We believe in openness and transparency. Our management team is a mix of energy, entrepreneurship, structure, agility, innovation and long term commitment. We are all different but work seamlessly and all share the same passion; to exceed expectations and create unique value for our customers



SAFETY

QUALITY POLICY

- We have experienced and trained personnel who perform their functions and duties to the highest degree.
- We have the latest equipment required in our field, which is kept well maintained and suitably qualified and experienced operators to match.
- All work is fully supervised and our staffs have been given the authority and responsibility for ensuring that the requirements of quality service are implemented and maintained. Markpol General Dealers Quality

Policy is aimed at achieving the following objectives:

1. To effect the best possible workmanship using the best products offered by our suppliers.
2. To provide prospective customers with a high level of confidence and maintain that confidence by satisfying the customer's requirements.
3. To increase quality consciousness and workmanship in all company personnel.
4. To ensure that a contract is carried out within the agreed time scale.
5. Through realizing these objectives we are confident that we will improve our productivity and thus increase our profits.

SAFETY STANDARDS

In accordance with the regulations and the safety and quality standards stipulated in with the ISO 9001 management system Markpol General Dealers upholds all the safety measures required. Our safety package is as follows:-

- All workers before taken to the site are oriented and inducted about the mining industry.
- We ensure that all workers have proper Protective Equipment before commencement of any works.
- An engineer pertaining to his specialty is always on site to give extra information and support.
- All equipment and machinery being used on site are all environmental friendly, vices such as smoking, and emission of other harmful substances is highly monitored and controlled.
- Qualified persons are assigned to specific duties according to their qualifications
- Shelton adheres to all the safety precautions tabulated by the client/customer.

RISK ASSESSMENT POLICY

Markpol General Dealers is committed to maintaining a workplace in which safety is part of everything we do and is as important as anything we do. It is our policy that all work activities are assessed in order to identify existing and potential risks to the health or safety of Infra Works employees, subcontractors, and/or the public, and that reasonably practicable measures will be taken to eliminate, reduce or control those risks by way of a Job Risk Assessment (JRA).

It is Markpol's Policy to adhere to the following:

- Conduct written risk assessment of the work site prior to commencement of a new project to identify existing or potential hazards. The risk assessment will then be done on a daily basis.
- Where reasonably practicable, Management will involve affected workers in the performance of the risk assessment and in the control and elimination of those hazards identified by the risk assessment.
- Management will ensure that the results of the risk assessment are communicated to those workers affected by its findings.
- Management will ensure that the risk assessment is performed prior to commencement of work on a new job-site:
 - Weekly and/or at intervals that is reasonable and practicable to prevent the development of unsafe working practices and conditions
 - When a new work procedure is introduced or any conditions to the task; and
 - When a work procedure or operation changes
 - During daily review at tool-box meetings.

All employees, including management and supervisors, are responsible and accountable for the company's overall safety initiatives, following all procedures, working safely, and providing information towards improving all safety measures. Complete and active participation by everyone, every day, in every job is necessary to achieve the safety excellence that Crown Utilities expects.

Please Note: Action to eliminate or reduce the risk identified must be planned in advance or undertaken immediately on site to prevent any accident, injury or loss.

QUALITY ASSURANCE POLICY

Since its formation the company has been committed to the pursuit of quality within the Construction Industry. The creation of a clean and happy environment both on site and in the office subscribes to this philosophy. Objects of courteous and obliging service carried out in an efficient and professional manner embraces the nucleus of the company.

The Company Directors take an active part in the management and day to day supervision of all projects.

A competitive spirit is observed in all dealings with potential clients with regard and observance of the Trade Practice Act. Markpol General Dealers follow all award and trade agreements related to the Construction Industry and may from time to time vary these, provided they are in addition to award requirements and adhere to all other statutory requirements associated with business, common law requirements and the principle of established good practice.

It is the objective of Markpol General Dealers to deliver works and services in compliance with the requirements of our clients.

To this end Markpol General Dealers has total commitment to the implementation and maintenance of a Quality System that fulfils the requirements of the National Council for Construction of Zambia. Quality is the responsibility of every employee at Markpol General Dealers. To assist all employees in this organisation, the management shall ensure that employees are clearly briefed as to their responsibilities and that suitably qualified personnel are provided with adequate re-sources and training to maintain the required quality standards.

TECHNICAL STAFF AND WELFARE

All works are carried out by qualified and competent staff so as to meet the expectations of clients by adhering to the specifications and regulations recommended by regulatory bodies in execution of assignments. The project managers and works supervisors carry out regular quality control checks during, and after completion of a specific work program.



Our Business Service anchored On Quality Service Delivery, Professionalism and Value Addition to Our Esteemed Clients' Needs". Our success is anchored on our continued human capital development to meet our client's standards of expectations. That's why our customers scope came from every line of business and industry.

- **Residential homes**
- **Commercial offices**
- **Schools, clinics & hospitals**
- **Farms and rural water systems**
- **Telecommunications infrastructure**
- **Government & local authorities**

WHY CLIENTS PARTNER WITH US

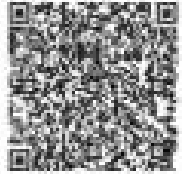
- Proven track record in executing high stakes energy projects
- Responsive technical support team and service level commitment
- Transparent quotation and documentation process
- Capacity to handle large scale and multi-site installations
- Long-term maintenance contracts and performance monitoring
- Focused on reliability, uptime, and power independence

MEMBERSHIPS & CERTIFICATIONS

Markpol General Dealers is working towards becoming a leader in the industry with relevant certifications and memberships. Markpol General Dealers is a member of respected industry Associations.

We are fully registered with the relevant statutory and professional bodies.





Republic Of Zambia

The Companies Act, 2017

(Act No. 10 of 2017)

The Companies (Prescribed Forms) Regulations, 2018

(Section 14)

**CERTIFICATE OF INCORPORATION
PRIVATE COMPANY LIMITED BY SHARES**

This is to certify that MARKPOL GENERAL DEARLERS LIMITED is on and from the
14th day of October 2024 incorporated as a PRIVATE COMPANY LIMITED BY SHARES.

Given under my hand and seal at Lusaka, Zambia, this **14th day of October 2024**.



NDONANO MWANABEENE SIULUTA

Deputy Registrar of Companies



**ZAMBIA
REVENUE
AUTHORITY** | *My Tax
Your Tax
Our Destiny*

TAXPAYER IDENTIFICATION NUMBER REGISTRATION

This is to certify that the Taxpayer whose details are shown below has been registered with Zambia Revenue Authority.



TAXPAYER INFORMATION

Identity No./ NRC	:	120241014277
TPIN	:	2003434048
Taxpayer Name	:	MARKPOL GENERAL DEARLERS LIMITED
Trading As	:	MARKPOL GENERAL DEARLERS LIMITED
Physical Address	:	jameson avenue town area Kabwe Central Province
Postal Address	:	JAMESON AVENUE , TOWN AREA, KABWE, CENTRAL PROVINCE, ZAMBIA
TPIN Jurisdiction	:	ISMTO_Central

SECTION B: REGISTRATION DETAILS

Type of Registration	Effective Date of Registration
TAXPAYER IDENTIFICATION NUMBER	14 Oct 2024

This certificate shall remain in force until it is cancelled by ZRA.

JOSEPH NONDE

Issue date : 14 Oct 2024



NATIONAL PENSION SCHEME AUTHORITY

COMPLIANCE CERTIFICATE

Employer Account Number: 6564027
Certificate Reference: CDAE398D06BB1BC3F17267517631
Date Issued: 7th January 2025



This compliance certificate is issued to
MARKPOL GENERAL DEALERS
without any alterations and is valid till
7th February 2025

Authorized Signatory

To authenticate this certificate, scan the QR code or visit www.napsa.co.zm/online-services and click on **Verify Certificate** under Employer Services.

P.O. Box 51275
Levy Business Park
Corner of Church & Kabelanga Roads, Lusaka
Contact Center Toll-free Line 677

+260 973 000 677

+260 211 395 677

info@napsa.co.zm

www.napsa.co.zm

Be smart, Secure your future.

WORKERS' COMPENSATION FUND CONTROL BOARD



EMPLOYER COMPLIANCE CERTIFICATE

THIS IS TO CERTIFY THAT

MARKPOL GENERAL DEALERS LIMITED

EMPLOYER ACCOUNT NUMBER: 0005002579/2001

IS REGISTERED WITH THE WORKERS' COMPENSATION FUND CONTROL BOARD AND IS COMPLIANT
WITH THE PROVISIONS OF THE WORKERS' COMPENSATION ACT NO.10 OF 1999 OF THE LAWS OF ZAMBIA



AUTHORISED SIGNATORY

CERTIFICATE NUMBER

DATE ISSUED

VALID UP TO

ECN_0005003821

07/01/2025

31/12/2025

WORKERS' HAVE A RIGHT TO COMPENSATION



Welcome to the e-Tendering Platform
This is your registration information as at 04/11/2024:

Supplier details	
Organisation name	MARKPOL GENERAL DEALERS LIMITED
Company Registration Number	120241014277
Tax Payer's Identification Number	2003434048
ZPPA Registration Number	103341
Company type	Local Company
Address	Jameson Avenue 32 jameson avenue
Postal code	10101
City	Kabwe
Country	Zambia
Phone Number	0969132649
Shareholders	
CEEC category	
Valid Until	04/11/2025

You have registered in accordance with the Tender Regulations (Public Procurement Act No 12 of 2008) of the laws of Zambia to supply Goods and Services to Public Institutions in the following categories:

Areas of Interest

42000000-Medical Equipment and Accessories and Supplies
44000000-Office Equipment and Accessories and Supplies
48000000-Service Industry Machinery and Equipment and Supplies
72000000-Building and Construction and Maintenance Services
41100000-Laboratory and scientific equipment

OUR CONTACTS



9 NAZEMCO COMPLEX CHIKOSO DRIVE OFF PALM DRIVE CHELSTONE

LUSAKA ZAMBIA



+260969132649 /+260 96 8609829 and +61416481128



info@markpol.com



www.markpolgd.com

